

FURNISHED
APARTMENTS
IN THE HEART
OF BERNE

WELCOME

We like to welcome you to “Mohnhaus” at Brunngasse 6 in the beautiful historic City of Berne.

The charming seven-floor building, situated in the heart of the UNESCO World Heritage site, offers 38 bright and fully equipped one-room apartments.

It is the cozy home away from home – ideal for temporary stays in Berne.

The apartments offer the following amenities:

- Fully equipped kitchen with a refrigerator, cooking utensils and dishes
- Separate bathroom with a sink, toilet, shower or bathtub
- Kitchen towels, bath towels and bed linen
- Internet / WiFi
- Elevator
- Washing machine and tumble dryer in the basement (card system)

The apartments are generally rented out for a minimum of one calendar month or more, based on a fixed-term lease agreement that can be extended as needed. Short-term stays for vacations of at least 2 weeks can be arranged upon request.

AVAILABLE APARTMENTS

Please refer to the price list enclosed or check www.mohnhaus.ch

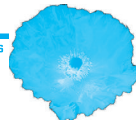
TYPE	m²	OCCUPANCY	SIDE	BATHROOM
SMART	20	1(–2)	North + South	Shower
MIDI	23	1–2	North + South	Shower
MAXI	30	1–2*	North	Bathtub
GRANDE	35	1–2*	South	Bathtub

* Maxi and Grande apartments can also accommodate a third person (extra bed) upon request

Rates include:

- Heating, electricity and water
- Kitchen towels, bath towels and bed linen
- Weekly cleaning service





LOCATION

The Mohnhaus is centrally located in the heart of the historic City of Berne.

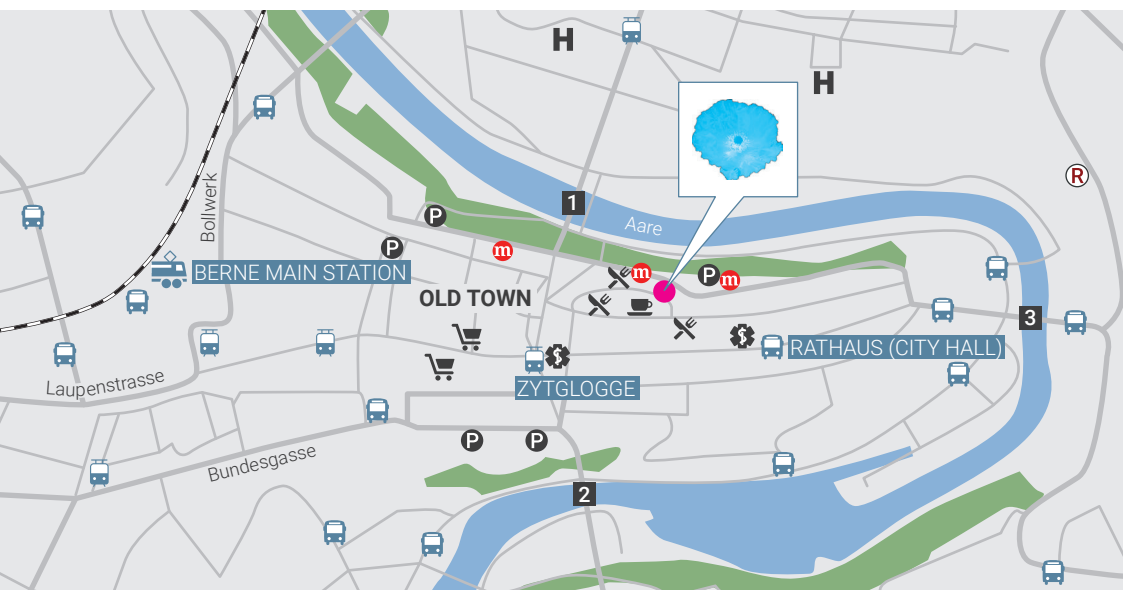
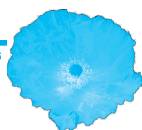
The famous medieval arcades with their attractive little shops and cafés are just a few steps away from Mohnhaus. The Aare River, supermarkets and shops, restaurants, movie theatres and museums are also close by. Welcome to the UNESCO world heritage.

Ideal public transport connections make travelling easy to and from Mohnhaus. The "Bern Zytglogge" bus and tram stop is just a short walk away. Guests arriving by car can use the covered parking "Rathaus" located directly behind the building.
















A short bus or tram ride will take you directly to Berne main railway station or you can also opt for a relaxing 10-minute walk. The train station offers efficient rail connections to all Swiss cities and the neighboring countries.

**"MOHNHAUS – A PERFECT
HOMEBASE FOR WORK AND
PLEASURE ACTIVITIES"**





Legende

- | | | | | | |
|--|------------------------|---|------------------------|---|-------------------|
|  | MOHNHAUS Appartements |  | Shopping |  | Kornhausbrücke |
|  | Berne main station |  | Pharmacy |  | Kirchenfeldbrücke |
|  | "Rathaus" bus stop |  | Restaurant |  | Nydeggbücke |
|  | "Zytglogge" tram stop |  | Café |  | Parking garages |
|  | Mobility (car sharing) |  | Restaurant Rosengarten |  | Hospital |

Contact

Information:	Monday to Thursday
Hours:	10 a.m. to 2 p.m.
Address:	Mohnhaus Appartements, Brunngasse 6, CH-3011 Berne
Telephone:	+41 31 311 06 40
Fax:	+41 31 311 35 47
E-mail:	info@mohnhaus.ch